

Required tools
Outils requis
Herramientas necesarias



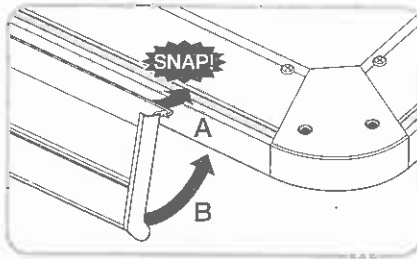
Isopropyl alcohol
 Alcool isopropylique
 Alcohol Isopropílico

1

Attach both marker trays to the board

Fixer les deux porte-marqueurs au tableau

Fije las dos bandejas para marcadores al pizarrón de corcho o de borrado en seco

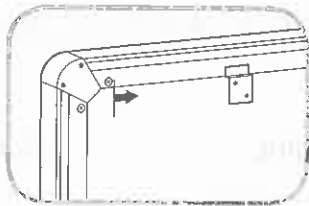
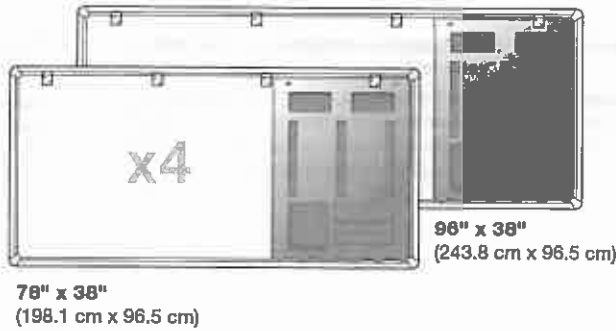


2

Use the correct number of brackets

Utiliser le nombre adéquat de supports

Utilice la cantidad correcta de ménsulas

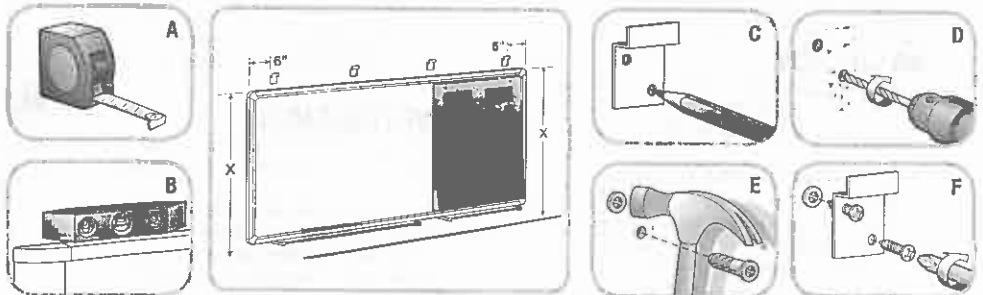


3

Position the board

Position du cadre

Ubique el pizarrón

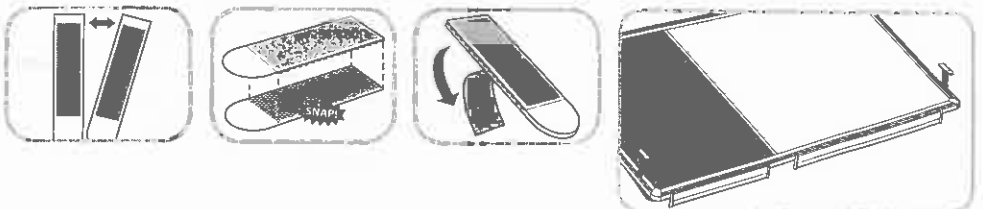


4

Apply Command™ Picture Hanging Strips

Fixation des bandes pour tableaux Command™

Aplique Tiras para Colgar Cuadros Command™



5

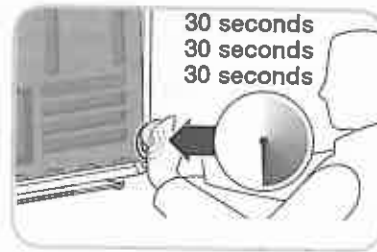
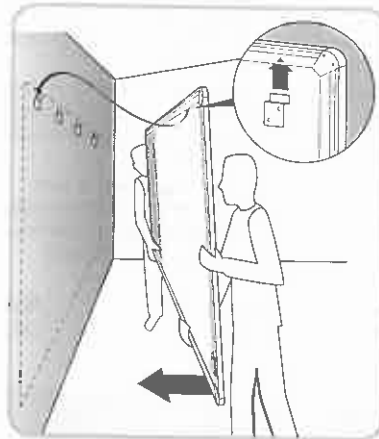
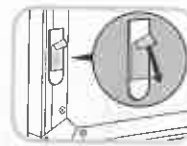
Mount board on the brackets

Installer le babillard sur les supports

Coloque el pizarrón sobre las ménsulas



Clean the wall with isopropyl alcohol
Nettoyer la surface du mur avec de l'alcool isopropylique
Limpie la superficie con alcohol isopropílico

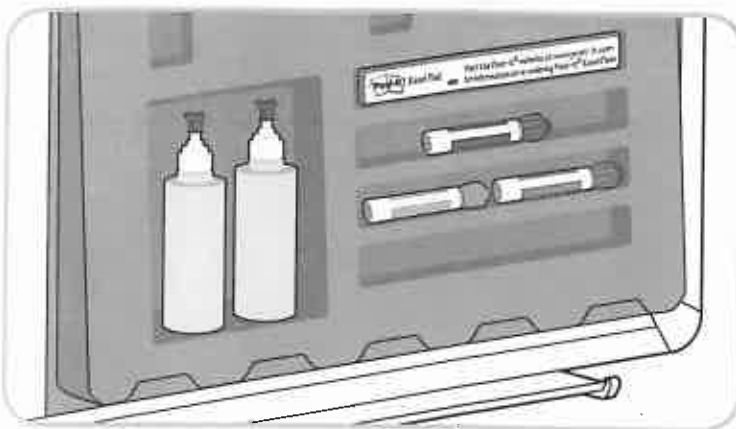
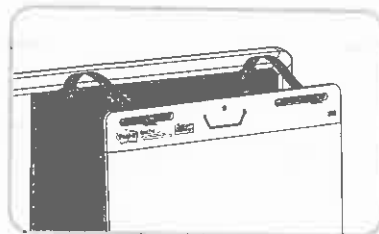


6

Hang easel pad on brackets to the right of white board

Suspendre le tableau à feuilles mobiles sur le côté droit du tableau blanc

Cuelgue el bloc adhesivo en las ménsulas a la derecha del pizarrón blanco



Built-in compartments make storage easy!

- Keep extra markers on hand
- Space for eraser and cleaning supplies
- Includes Post-it® Easel Pad reorder information

Compartiments intégrés pour un entreposage facile!

- Garder des marqueurs supplémentaires en main
- Espace pour l'effaceur et les produits de nettoyage
- Les informations pour le réapprovisionnement des tableaux de feuilles mobiles Post-it® sont incluses

¡Los compartimentos empotrados facilitan el almacenamiento!

- Tenga marcadores extra a mano
- Lugar para borrador y elementos de limpieza
- Incluye información para volver a pedir el Bloc adhesivo de Post-it®